



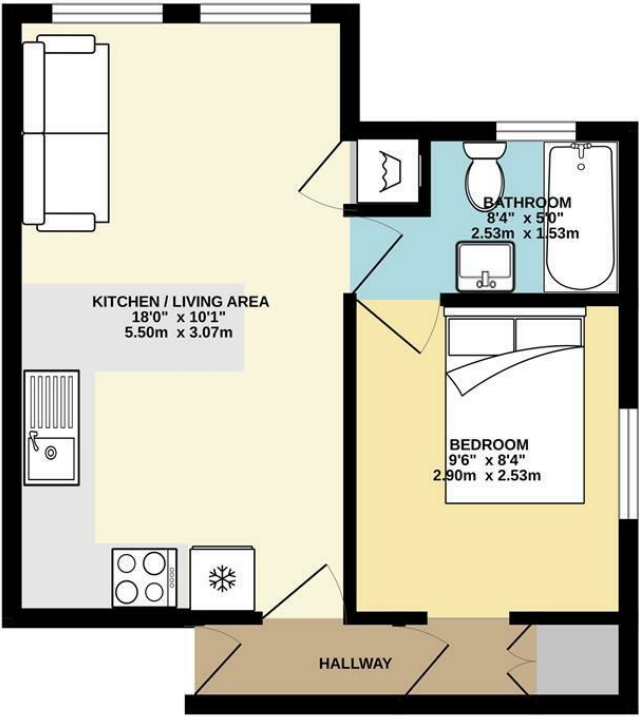
**1 Bed  
Apartment  
located in West  
Didsbury**

£1,050 Per Month



**STANTON**  
PROPERTIES

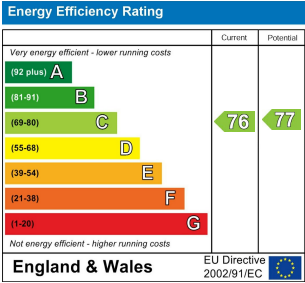
GROUND FLOOR  
335 sq.ft. (31.1 sq.m.) approx.



TOTAL FLOOR AREA : 335 sq.ft. (31.1 sq.m.) approx.

Whilst every attempt has been made to ensure the accuracy of the floorplan contained here, measurements of doors, windows, rooms and any other items are approximate and no responsibility is taken for any error, omission or mis-statement. This plan is for illustrative purposes only and should be used as such by any prospective purchaser. The services, systems and appliances shown have not been tested and no guarantee as to their operability or efficiency can be given.

Made with Metropix ©2026



DIRECTIONS

CONTACT

31 Barlow Moor Road  
Didsbury  
Manchester  
M20 6TW

E: [office@stantonproperties.co.uk](mailto:office@stantonproperties.co.uk)  
T: 01614345307

